



Detailed analysis of filament yarn characteristics such as broken filaments, fluff, evenness, yarn defects, twist and interlace is important in order to achieve maximum process optimisation. For this purpose, it is of great advantage if the monitored yarn characteristics are not only presented numerically, but also visually.

Lenzing Instruments offers a series of laboratory systems for thorough yarn analysis with integrated defects visualisation; **PROMPT LAB** is the generic product name of three systems for defect- and yarn characteristics visualisation in the laboratory: **FRAYVIEW LAB**, **DEFECT VIEW LAB** and **YIS 200 LAB**. These are all-in-one units with integrated yarn sensors and camera systems in combination with a yarn take off system for offline operation.

All versions of **PROMPT LAB** generate pictures of detected yarn defects, which are then presented in the powerful evaluation software for further analysis. The systems differ from each other with regard to the yarn sensor and the image generation. Which **PROMPT LAB** version to apply for a specific measurement task depends on the individual requirements of each customer.

With the variety of **PROMPT LAB**, it is easy to find a laboratory system, which offers accurate and reliable defects visualisation of any kind of filament yarn.

Scope:

Off-line image analysis of yarn defects such as broken filaments and fluff as well as of vital yarn characteristics such as evenness, interlace and twist by means of a combination of an optical yarn sensor and a camera system.

Method:

By means of the yarn take-off unit, the filament is guided through the optical yarn sensor. Each time the sensor detects a defect, the camera is triggered automatically and an image is captured.

Results:

The **PROMPT LAB** software displays the captured images in real time. Each event is also graphically displayed as a function of winding length or winding time. The software offers both real time monitoring as well as historical results analysis with statistical evaluation of the measurements.



FRAY VIEW



DEFECT VIEW



YIS 200

Yarn take-off speed:

800 m/min (option 1200 m/min)

Air supply:

90 psi instrument air,
20 scfm (6 bar; 0.6 Nm³/min)

Dimensions:

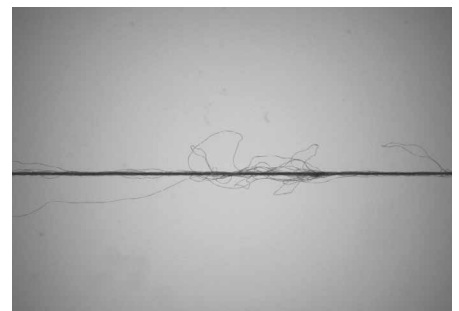
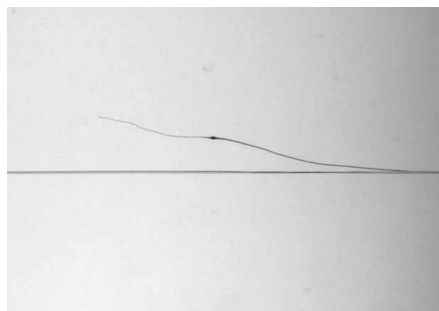
Width: 570 mm
Depth: 440 mm
Height: 400 mm

Protection class:

IP 64

Evaluation and control unit:

PC with Windows® based software



For technical details of a specific PROMPT LAB system, please refer to the leaflet of the corresponding online system.

Technical data and pictures are subject to change!